

# Quick Installation Guide

## PV Grid-Connected Inverter

SG30CX-P2 / SG50CX-P2



- Contents may be periodically updated or revised due to product development. The information in this guide is subject to change without notice. In no case shall this guide substitute for the user manual or related notes on the device.
- Make sure to read over, fully understand and strictly follow the detailed instructions of the user manual and other related regulations. Visit <http://www.sungrowpower.com/>, choose "PV Inverters" and search for the device model on the "Products" tab page to view or obtain the user manual.
- All operations can be performed only by qualified personnel, that must be trained in the installation and commissioning of the electrical system, as well as the dealing with hazards, and should also have the knowledge of the manual and of the local regulations and directives.
- Before installation, check that the package contents are intact and complete against the packing list. Contact SUNGROW or the distributor in case of any damaged or missing components.
- The cable must be intact and well insulated. Operation personnel must wear proper personal protective equipment (PPE) all the time.
- Any violation to the instructions in this quick installation manual or the operation manual could result in personal death or injury or device damage, and will void the warranty.

## Safety

Please follow the safety instructions related to the PV strings and the utility grid. Otherwise, SUNGROW shall not be held liable for any damage caused.

### DANGER

- Lethal voltage!
- PV strings will produce electrical power when exposed to sunlight and can cause a lethal voltage and an electric shock.
- Only qualified personnel can perform the wiring of the PV panels.
- All electrical connections must be in accordance with local and national standards.
- Only with the permission of the utility grid, the inverter can be connected to the utility grid.
- Do not open the enclosure at any time. Unauthorized opening will void guarantee and warranty claims and in most cases terminate the operating license.
- When the enclosure lid is removed, live components can be touched which can result in death or serious injury due to electric shock.

### WARNING

All the warning labels and nameplate on the inverter body must be clearly visible and not be removed, covered or pasted.

### CAUTION

Risk of burns due to hot components!

- Do not touch any hot parts (such as heat sinks) during operation. Only the DC switch can safely be touched at any time. Damage due to electromagnetic radiation.

### NOTICE

Only qualified personnel can perform the country setting.

Unauthorized alteration of the country setting may cause a breach of the type-certificate marking.

## Security Declaration













For details on the product's network security vulnerability response process and vulnerability disclosure, please scan the QR code on the right or visit the following website:

<https://en.sungrowpower.com/security-vulnerability-management>

For more information on network security, please refer to the user manual of the communication module or the Data Logger that comes with the product.

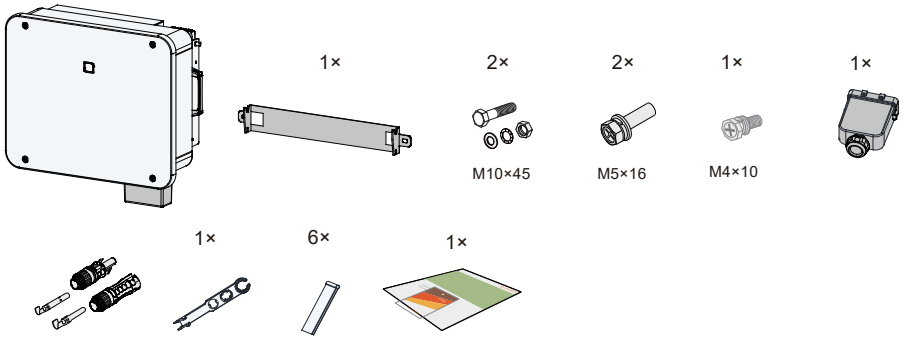


The symbols on the inverter body are as follows.

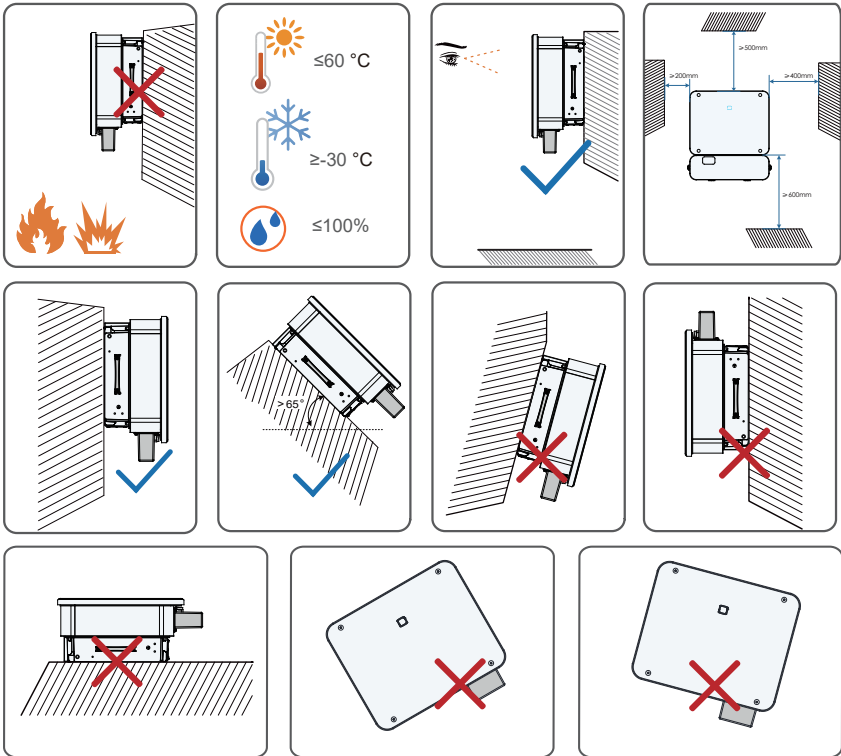
	Do not dispose of the inverter together with household waste.		UKCA mark of conformity. The height of the label should not exceed 5mm.
	CE mark of conformity. EU/EEA Importer.		Disconnect the inverter from all the external power sources before service!
	TÜV mark of conformity.		The inverter does not have a transformer.
	Danger to life due to high voltages! Only qualified personnel can open and maintain the inverter.		Danger to life due to high voltages! Do not touch live parts for 15 minutes after disconnection from the power sources.
	There is a danger from a hot surface that may exceed 60°C.		Regulatory compliance mark.
	CMim mark of conformity.		Check the user manual before service!

Users may also attach other warning signs as per the requirements of the local standards or installation specifications.

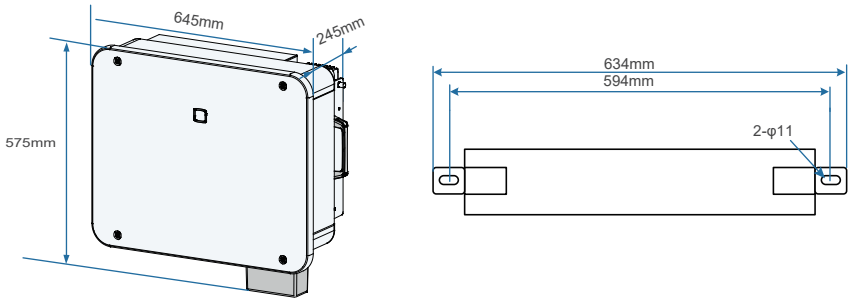
## Scope of Delivery



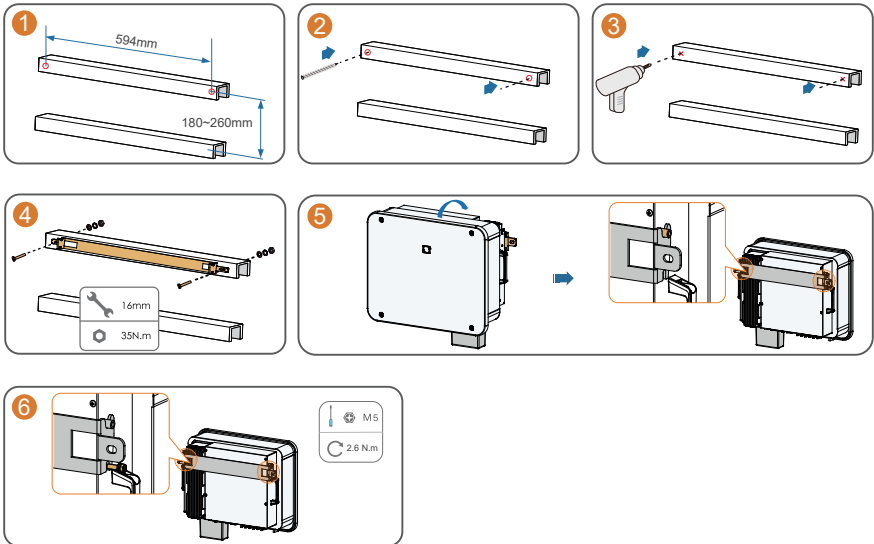
## Mounting location



## Dimension



## Mounting

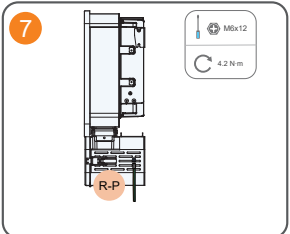
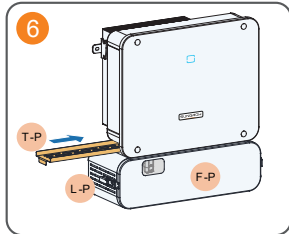
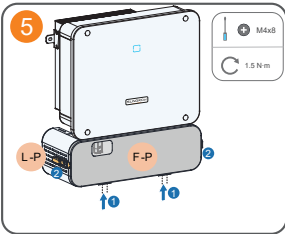
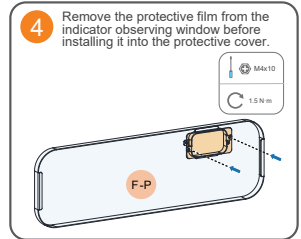
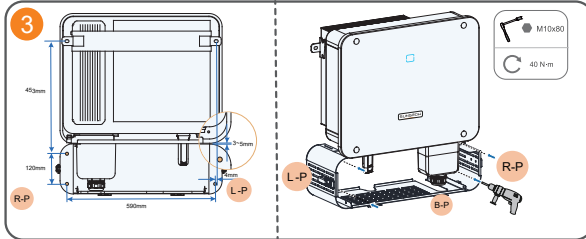
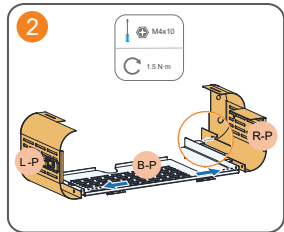
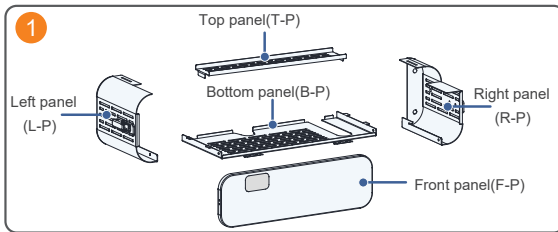


## Installing protective cover

Material preparation

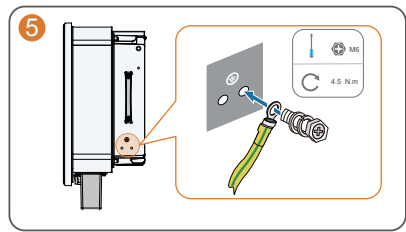
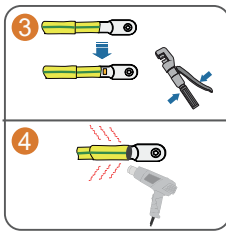
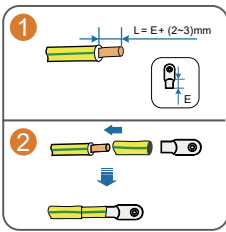
Item	Quantity	Specification	Source
countersunk screw	4	M4x8	Delivery scope
hexagon bolt	4	M4x10	Delivery scope
hexagon bolt assembly	1	M6x12	Delivery scope
expansion bolt assembly	4	M10x80	Self-prepared

Installing Protective Cover

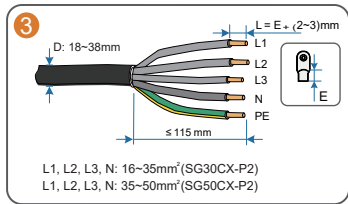
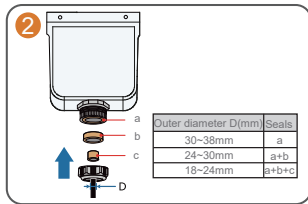
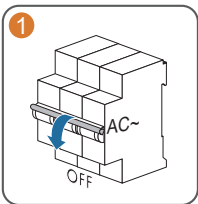


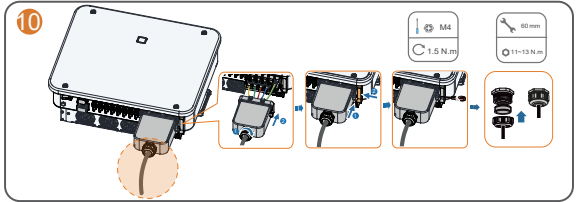
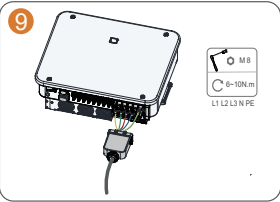
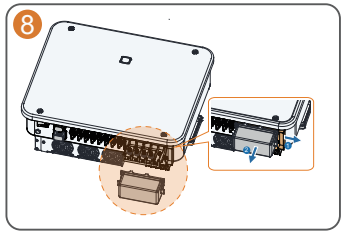
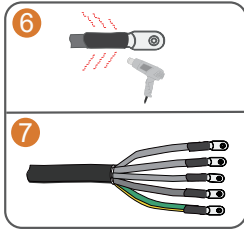
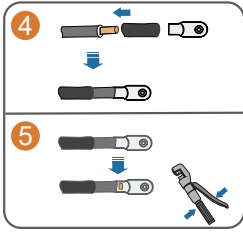
Note: This protective cover may cause wireless communication signals to attenuate, thus affecting the communication distance of the wireless communication module.

### PE Connection

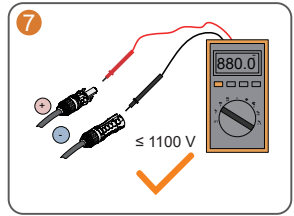
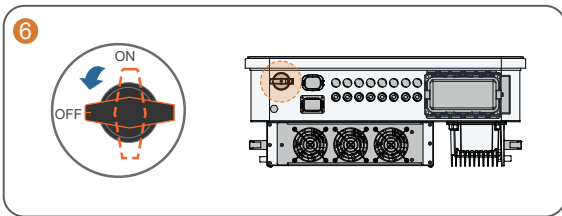
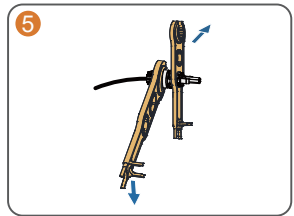
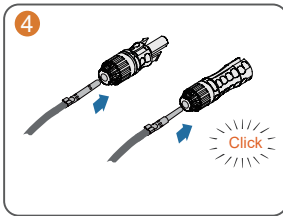
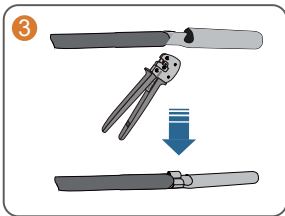
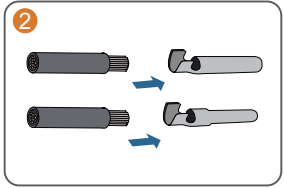
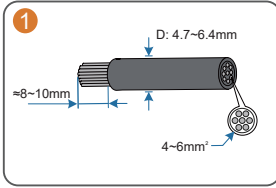
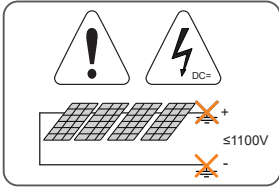


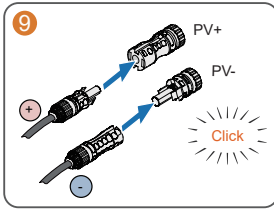
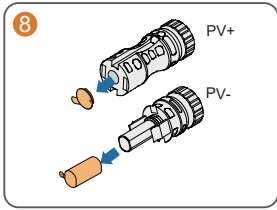
### AC Connection (For a multi-core cable)





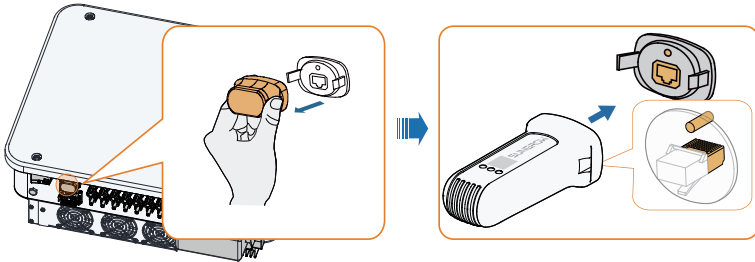
## DC Connection



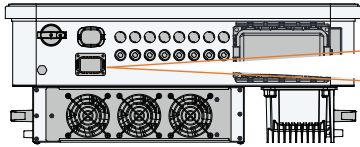


### Communication Module Connection (optional)

The image shown here is for reference only. The actual product you receive may differ.



### COM2 ( DI , DRM , DO , RS485 , Meter )

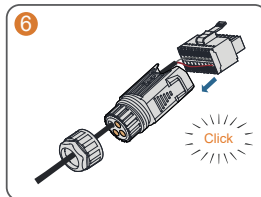
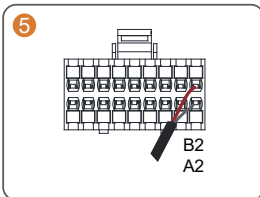
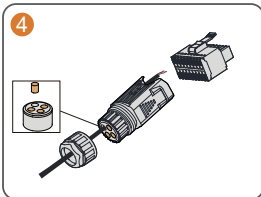
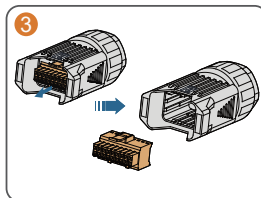
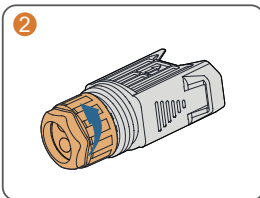
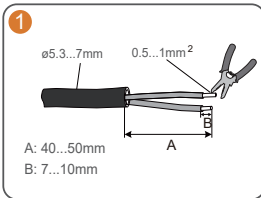


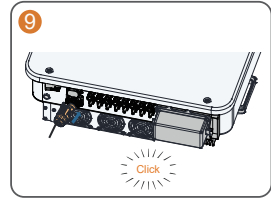
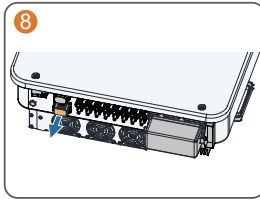
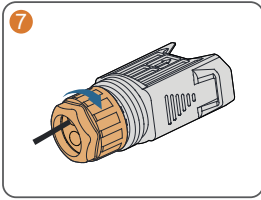
DI		DRM			DO	RS485		Meter
DI	DI	C	D4/8	D2/6	COM	B1	B1	B2
PGND	PGND	R	D3/7	D1/5	NO	A1	A1	A2

### COM2 Connection ( DI , DO , RS485 , Meter)

Take meter Connection as an example.

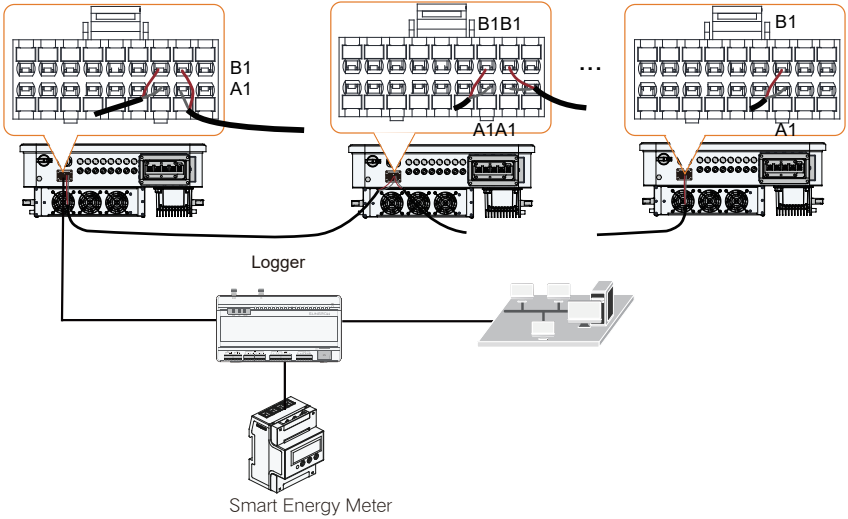
The images shown here are for reference only. The actual product received shall prevail.





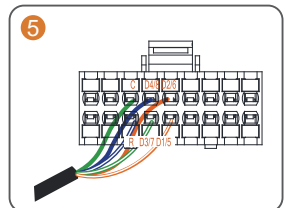
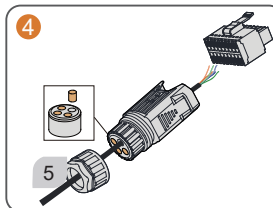
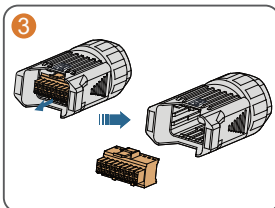
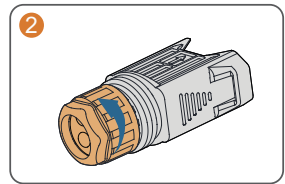
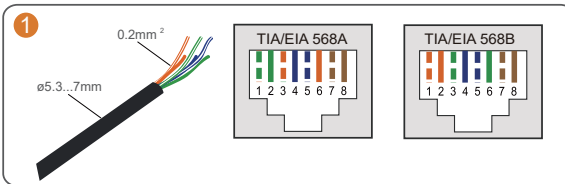
Inverter parallel

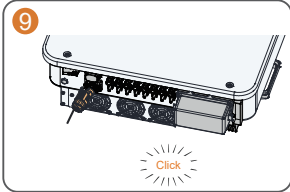
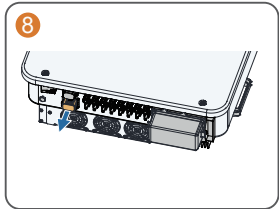
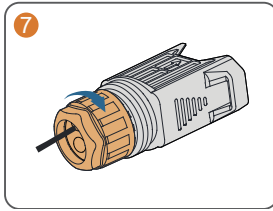
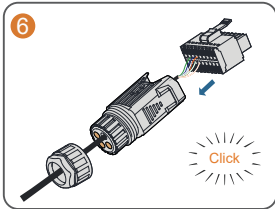
Maximum 30 inverters with the same type can be connected in parallel.



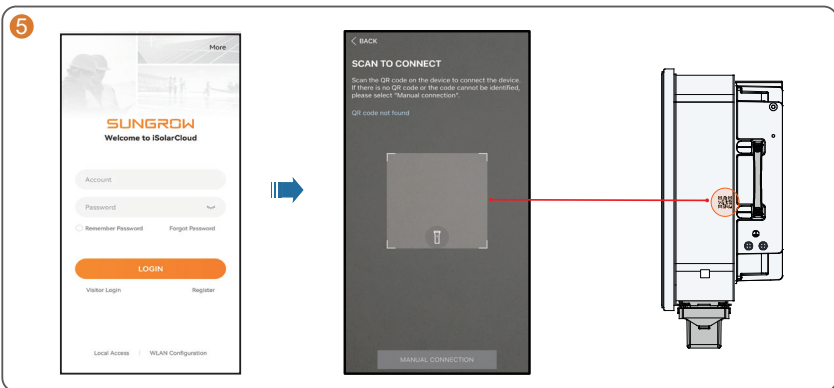
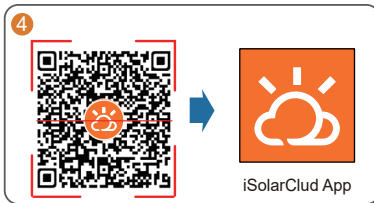
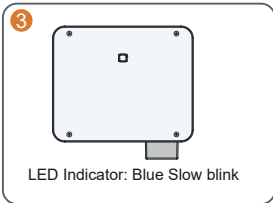
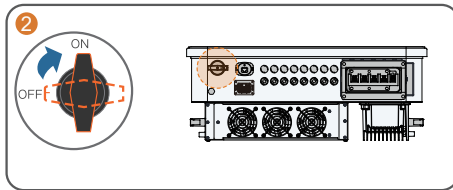
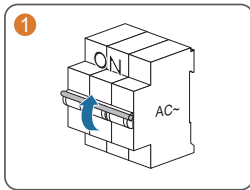
### COM2 Connection (DRM)

The images shown here are for reference only. The actual product received shall prevail.

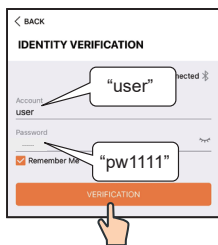




## Power on






6



Scan the QR code to access the iSolarCloud App User Manual and complete software commissioning by referring to the Device Commissioning section.

## LED Indicator

LED color	State	Definition
	ON	The device is connected to the grid and operating normally.
	Fast blink (Period: 0.2s)	The Bluetooth communication is connected and there is data communication. No system fault occurs.
	Slow blink (Period: 2s)	The device is in standby or startup state (not feeding power into the grid).
	Slow blink once, fast blink three times	he inverter is performing PID recovery.
	ON	A fault occurs and the device cannot connect to the grid.
	Twinkling	The Bluetooth connection is established, data communication in process, and a system fault occurs.
	OFF	Both the AC and DC sides are powered down.



More information in the QR code or  
at <http://support.sungrowpower.com/>

